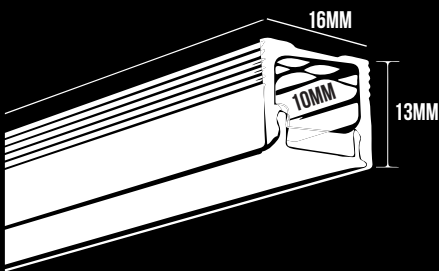
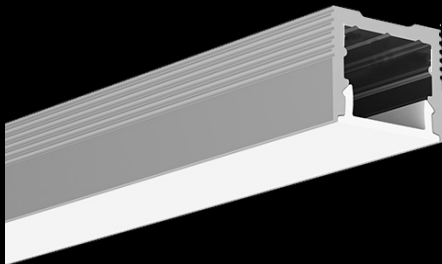


S16



ITEM CODE	WATTAGE	COLOR TEMP	MIN LUMEN	LED IM
160210	10W	2700K	1000 X 16 X 13	680LM/M
160310	10W	3000K	1000 X 16 X 13	750LM/M
160410	10W	4000K	1000 X 16 X 13	800LM/M

Features:

- Surface mount super slim profile width 16mm.
- 2 step MacAdam ellipse for highest colour consistency.
- High quality extruded aluminium profiles.
- Frosted lens for uniform and smooth illumination.
- Dot free, continuous homogeneous lighting effect.
- 50mm incremental length, continuous runs.
- Remote 24V driver, single driver for multiple lengths, cost effective solution.
- Life: 50,000 hours L90/B10.
- Easy to install with mounting brackets.

Materials

Extruded aluminium profiles with durable UV stabilized diffuser.



Applications

Joinery lighting, cabinet lighting, display lighting, cove lighting, accent and indirect lighting.

Options

- **Dimming:** DALI and DSI dimming 1-10V dimming
- **CRI 95+**
- **Color Temperatures :** 2700K, 3000K, 4000K, 5000K and 6000K
- **Individual luminaire or continuous runs**
- **Customised wattages**
- **RGB LED boards**
- **Emergency modules**

Accessories

