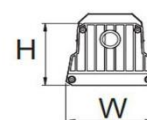
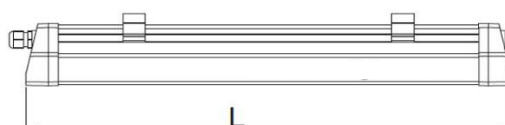


# LITENET

## SHIELD



### Product information



Source Type	LED Array
Corrected Colour Temperature	4000K
Control gear	Electronic Driver
Dimensions	W106xH86 (mm)
IP	IP65
Power	Up to 70W
CRI	>80 or 90
IK rating	10

The Shield is a linear surface mounted waterproof LED luminaire. This heavy-duty light fitting is well built to withstand the elements suitable for commercial, industrial or outdoor applications where is deemed protection is required against dust, moisture rated IP66. This fitting is vandal resistant with an impressive IK10 rating.

The Shield is designed with fully enclosed polycarbonate diffuser and Aluminium body inside the polycarbonate body. This fitting is designed with smooth curves to minimize water retention, which makes this fitting ideal for wet areas.

This fitting can be surface mounted and suspended.

Colour Rendering Index 80 or 90

Non-dimmable ECG standard, DALI is optional

50,000 hour life span (L80)

Optional Emergency and custom made heavy duty bracket

### Specification of the product

Shield L(mm)	Power	CRI	CCT	Part Number	Lumens (lm)
600mm	30W	80	4000K	Shield 600.48.30	2700lm
1200mm	60W	80	4000K	Shield 1200.48.60	5400lm
600mm	30W	90	4000K	Shield 600.49.30	2565lm
1200mm	60W	90	4000K	Shield 1200.49.60	5130lm