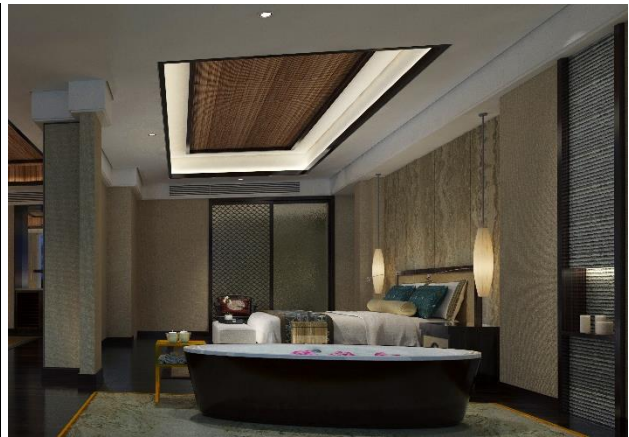


## Nova Flex S IP67



### Product information



Corrected Colour Temperature	Specify 3000K or 4000K
Control gear	Electronic Driver
IP	IP67 Fitting
Power	11W & 16W/m
Dimensions of the flex	12mmx16mm

The Nova Flex S is a IP67 rated dot free high output architectural lighting solution. This LED fitting is only flexible in the horizontal plain, there are two types of diffusers available with this fitting dome diffuser and flat diffuser. These two products are more commonly used for the indoor or outdoor architectural lighting. This fitting can be mold in to curves and bends, minimum bend radius is 40mm.

Operating Temperature: 25°C to 45°C  
Luminous flux at 25°C 3000K 674lm/m or 4000K 700lm/m.

Cut Length 100mm (markings are provided)

Flexible PVC material housing can be cut and bendable, Installs easily into linear aluminum "U" channel and/or mini-channel clips.

Non-dimmable ECG standard, Phase Dim/DALI is optional.

50,000-hour 5 year warranty

### Specification of the product

Power	11W/m	11W/m	16W/m	16W/m
CRI	CRI80	CRI80	CRI80	CRI80
luminous flux	302lm	332lm	647lm	711lm
CCT	3000K	4000K	3000K	4000K
Part No:	NovaS11-63-CW-86	NovaS11-64-CW-86	NovaS20-63-CW-86	NovaS20-64-CW-86
RGBW				
Part No:	NovaS11-63-CW-RBW6			